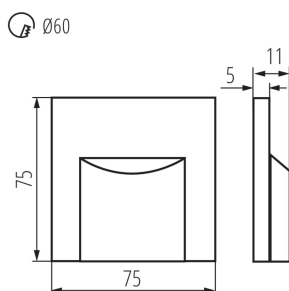
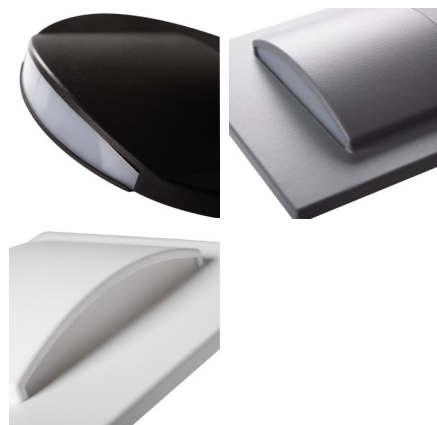


Staircase LED light fitting

5905339333322



Kanlux ERINUS is a unique series of premium stairwaf fittings made of plastic. These luminaires are characterized by exceptional lightness due to the materials from which they were made, and at the same time they are made with great precision and attention to detail. Kanlux ERINUS are very thin, so they flush with the wall line and make it a discreet decoration. We have three colors to choose (white, black and gray), two colors of light (warm and neutral light) and three different models of luminaires. The Kanlux ERINUS L is a square luminaire glowing in one direction, the LL model shines in both directions, and the Kanlux ERINUS O is a round luminaire glowing in one direction.

### GENERAL DATA:

**To be built into the wall:** yes

**Colour:** black

**Place of assembly:** Recessed mount in the wall

**Place of application:** Indoors

**Minimum distance from the illuminated object:** 0,1m

**Compatible with a dimmer:** no

**Replaceable light source:** no

**Required diameter of the assembly box [Ømm]:** 60

**Assembly-hole dimensions [mm]:** 60

**Integrated LED light source:** yes

### TECHNICAL DATA:

**Rated voltage [V]:** 12 DC

**Maximum power [W]:** 0,8

**Class of protection against electric shock:** III

**Lampshade material:** plastic

**Diode type:** LED SMD

**Luminous flux [lm]:** 15

**Colour temperature:** Warm white

**Colour temperature [K]:** 3000

**Colour uniformity [SDCM]:** ≤6

**Colour-rendering index Ra:** ≥80

**Service life [h]:** 30000

**Number of on/off cycles:** ≥15000

**Ambient temperature range to which the product can be exposed:** 5÷25

**Enclosure material:** plastic

**Connection type:** Free cable ends

**The fixture set includes built-in LED's with the following energy classes:** A++,A+,A

**Lamp-heating time [s]:** ≤1

## 33332 ERINUS LED L B-WW

Staircase LED light fitting



**Lamp-ignition time [s]:**  $\leq 0,5$

**IP class:** 20

### LOGISTIC DATA:

**Unit of measurement:** unit

**Packaging method:** 100

**Number of units in the secondary packaging:** 1

**Number of units in the packaging:** 100