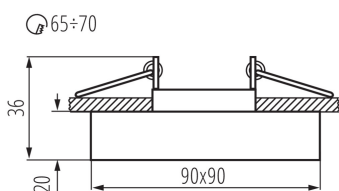
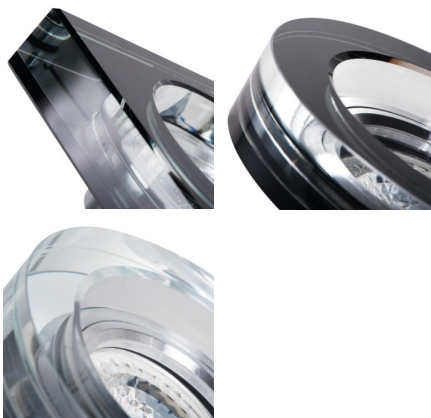


22112 MORTA B CT-DSL50-SR

Ceiling-mounted spotlight fitting

5905339221124



A wide range of the Kanlux MORTA holder models will allow making very original arrangements in each house. Kanlux MORTA meet expectations of everyone that highly values products of high quality, characterized by attractive and original design.

GENERAL DATA:

Colour: silver

Necessity of using self-shielding lamps: yes

Place of assembly: Recessed mount in the ceiling

Place of application: Indoors

Minimum distance from the illuminated object: 0,5m

Replaceable light source: yes

The product is not suitable to be installed on a normally flammable surface: >35W

The product is not suitable to be covered with a heat-insulating material: yes

Light source included: no

Length [mm]: 90

Width [mm]: 90

Height [mm]: 36

Assembly hole [mm]: Ø65-70

Wire length [m]: 0.12

TECHNICAL DATA:

Rated voltage [V]: 12 AC; 12 DC

Maximum power [W]: max 50

Class of protection against electric shock: III

Light source: MR16

Cap: Gx5,3

Ambient temperature range to which the product can be exposed: 5÷25

The fixture is adapted to the light sources of the following energy classes: A++,A+,A,B,C,D,E

Enclosure material: glass

Connection type: Free cable ends

Wire diameter [mm²]: 0.75

Lighting-fixture angle regulation: none

IP class: 20

LOGISTIC DATA:

Unit of measurement: unit

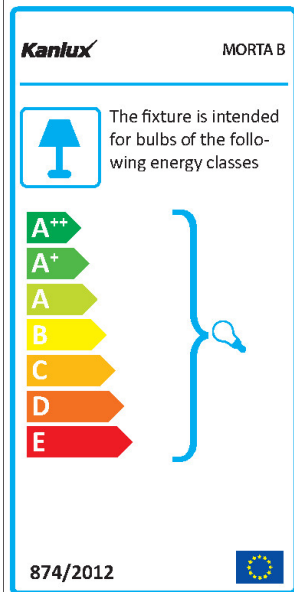
Packaging method: 30

Number of units in the secondary packaging: 1

Number of units in the packaging: 30

22112 MORTA B CT-DSL50-SR

Ceiling-mounted spotlight fitting



Net unit weight [g]: 290

Grammage [g]: 328

Length of a unit pack [cm]: 10

Width of a unit pack [cm]: 4.5

Height of a unit pack [cm]: 10

Weight of a cardboard box [kg]: 9.84

Width of a cardboard box [cm]: 26

Height of a cardboard box [cm]: 22

Length of a cardboard box [cm]: 32

Volume of a cardboard box [m³]: 0.018304

