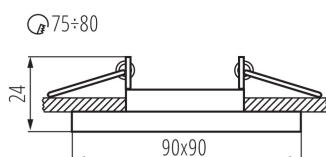
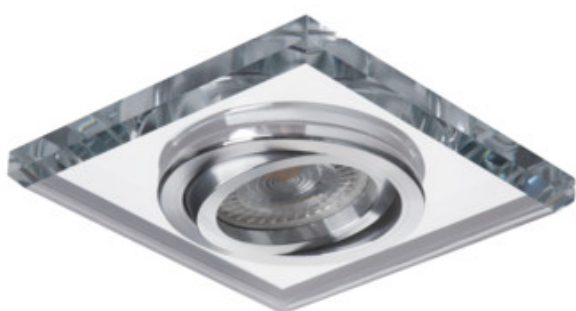


Ring for spotlight fittings

5905339267184



A wide range of the Kanlux MORTA holder models will allow making very original arrangements in each house. Kanlux MORTA meet expectations of everyone that highly values products of high quality, characterized by attractive and original design.

### GENERAL DATA:

**Colour:** silver  
**Necessity of using self-shielding lamps:** yes  
**Place of assembly:** Recessed mount in the ceiling  
**Place of application:** Indoors  
**Minimum distance from the illuminated object:** 0,5m  
**Decorative ring without a ceramic frame:** yes  
**Replaceable light source:** yes  
**The product is not suitable to be covered with a heat-insulating material:** yes  
**Light source included:** no  
**Length [mm]:** 90  
**Width [mm]:** 90  
**Height [mm]:** 24  
**Assembly hole [mm]:** Ø75-80

### TECHNICAL DATA:

**Rated voltage [V]:** 12 AC; 12 DC; 220-240 AC  
**Maximum power [W]:** max 35  
**Class of protection against electric shock:** II/III  
**Light source:** MR16/PAR16  
**Cap:** Gx5,3/GU10  
**Ambient temperature range to which the product can be exposed:** 5÷25  
**The fixture is adapted to the light sources of the following energy classes:** A++,A+,A,B,C,D,E  
**Enclosure material:** glass  
**Lighting-fixture angle regulation:** in one axis  
**Lighting-fixture angle regulation [°]:** 30  
**IP class:** 20

### LOGISTIC DATA:

**Unit of measurement:** unit  
**Packaging method:** 50  
**Number of units in the secondary packaging:** 1  
**Number of units in the packaging:** 50  
**Net unit weight [g]:** 162  
**Grammage [g]:** 201.2  
**Length of a unit pack [cm]:** 11

## 26718 MORTA CT-DTL50-SR

---

Ring for spotlight fittings



**Width of a unit pack [cm]:** 4.5

**Height of a unit pack [cm]:** 11

**Weight of a cardboard box [kg]:** 10.06

**Width of a cardboard box [cm]:** 25

**Height of a cardboard box [cm]:** 24.5

**Length of a cardboard box [cm] :** 56

**Volume of a cardboard box [m<sup>3</sup>]:** 0.0343