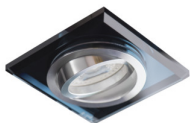


Ring for spotlight fittings

5905339267191



A wide range of the Kanlux MORTA holder models will allow making very original arrangements in each house. Kanlux MORTA meet expectations of everyone that highly values products of high quality, characterized by attractive and original design.

GENERAL DATA:

Colour: black

Necessity of using self-shielding lamps: yes

Place of assembly: Recessed mount in the ceiling

Place of application: Indoors

Minimum distance from the illuminated object: 0,5m

Decorative ring without a ceramic frame: yes

Replaceable light source: yes

The product is not suitable to be covered with a heat-insulating material: yes

Light source included: no

Length [mm]: 90

Width [mm]: 90

Height [mm]: 24

Assembly hole [mm]: Ø75-80

TECHNICAL DATA:

Rated voltage [V]: 12 AC; 12 DC; 220-240 AC

Maximum power [W]: max 35

Class of protection against electric shock: II/III

Light source: MR16/PAR16

Cap: Gx5,3/GU10

Ambient temperature range to which the product can be exposed: 5÷25

The fixture is adapted to the light sources of the following energy classes: A++,A+,A,B,C,D,E

Enclosure material: glass

Lighting-fixture angle regulation: in one axis

Lighting-fixture angle regulation [°]: 30

IP class: 20

LOGISTIC DATA:

Unit of measurement: unit

Packaging method: 50

Number of units in the secondary packaging: 1

Number of units in the packaging: 50

Net unit weight [g]: 162

Grammage [g]: 201.2

Length of a unit pack [cm]: 11

26719 MORTA CT-DTL50-B

Ring for spotlight fittings



Width of a unit pack [cm]: 4.5

Height of a unit pack [cm]: 11

Weight of a cardboard box [kg]: 10.06

Width of a cardboard box [cm]: 25

Height of a cardboard box [cm]: 24.5

Length of a cardboard box [cm] : 56

Volume of a cardboard box [m³]: 0.0343