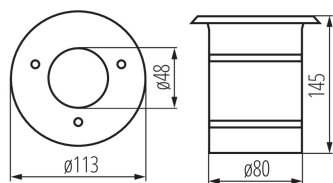


In-ground lighting fitting

5905339071729



IP
67



Kanlux BERG is a durable ground-recessed luminaire using a replaceable light source with an GU10 screw. It works great in illumination of driveways, alleys, sidewalks etc. It is manufactured of best quality materials owing to which can resist pressure up to 2 tons.

GENERAL DATA:

Colour: stainless steel

Place of assembly: mounted on the ground, in-ground

Place of application: Indoors and outdoors

Minimum distance from the illuminated object: 0,5m

Possibility of fixture-loop-through connection: yes

Replaceable light source: yes

Light source included: no

Fixture lighting direction: Top

Height [mm]: 145

Diameter [mm]: 113

Number of chokes: 2

TECHNICAL DATA:

Rated voltage [V]: 220-240 AC

Rated frequency [Hz]: 50

Maximum power [W]: max 10

Class of protection against electric shock: I

Light source: PAR16 LED

Cap: GU10

Ambient temperature range to which the product can be exposed: -20÷35

The fixture is adapted to the light sources of the following energy classes: A++,A+,A,B,C,D,E

Enclosure material: steel

Panel/frame material: stainless steel

Protective glass material: Tempered glass

Connection type: Bolt terminal block

Range of sections of wires used [mm²]: 1÷2,5

Permissible static pressure [kN]: 20

IK class: 08

IP class: 67

LOGISTIC DATA:

Unit of measurement: unit

Packaging method: 20

Number of units in the secondary packaging: 1

Number of units in the packaging: 20

Net unit weight [g]: 752

Grammage [g]: 852

Length of a unit pack [cm]: 11.5

Width of a unit pack [cm]: 11.5

In-ground lighting fitting



Height of a unit pack [cm]: 16
Weight of a cardboard box [kg]: 17.04
Width of a cardboard box [cm]: 25
Height of a cardboard box [cm]: 33.5
Length of a cardboard box [cm] : 60.5
Volume of a cardboard box [m³]: 0.050669