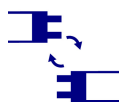


T8 LED tube linear fittings

5905339263629



Kanlux ALDO 4LED are a family of batten luminaires adapted to T8 LED fluorescent lamps. They are wall and ceiling luminaires characterised by modern, streamlined shape so they fit discreetly in each interior arrangement.

### GENERAL DATA:

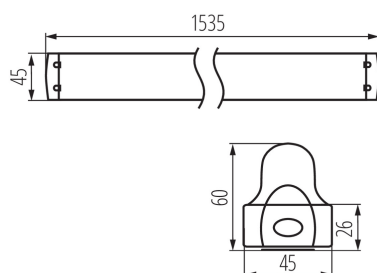
**Colour:** white  
**Place of assembly:** ceiling mounted  
**Place of application:** Indoors  
**Minimum distance from the illuminated object:** 0,5m  
**Replaceable light source:** yes  
**Light source included:** no  
**Power supply of T8 LED fluorescent lamps:** Unilateral  
**Length [mm]:** 1535  
**Width [mm]:** 45  
**Height [mm]:** 60.5

### TECHNICAL DATA:

**Rated voltage [V]:** 220-240 AC  
**Rated frequency [Hz]:** 50/60  
**Maximum power [W]:** max 58  
**Class of protection against electric shock:** I  
**Light source:** T8 LED  
**Cap:** G13  
**Ambient temperature range to which the product can be exposed:** 5÷25  
**The fixture is adapted to the light sources of the following energy classes:** A++,A+,A  
**Enclosure material:** Metal, plastic  
**Connection type:** Bolt terminal block  
**Range of sections of wires used [mm<sup>2</sup>]:** 0,5-2,5  
**IP class:** 20

### LOGISTIC DATA:

**Unit of measurement:** unit  
**Packaging method:** 16  
**Number of units in the secondary packaging:** 1  
**Number of units in the packaging:** 16  
**Net unit weight [g]:** 630  
**Grammage [g]:** 775.63  
**Length of a unit pack [cm]:** 153.5  
**Width of a unit pack [cm]:** 4.5  
**Height of a unit pack [cm]:** 3  
**Weight of a cardboard box [kg]:** 12.41008  
**Width of a cardboard box [cm]:** 21



### T8 LED tube linear fittings



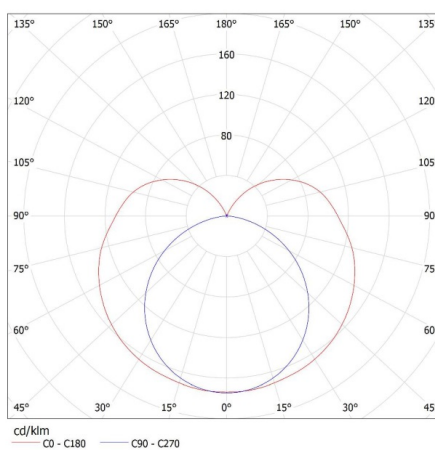
**Height of a cardboard box [cm]:** 12.5  
**Length of a cardboard box [cm] :** 155  
**Volume of a cardboard box [m<sup>3</sup>]:** 0.040688

#### ADDITIONAL INFORMATION:

- The fittings are intended for sources T8 LED 220-240 V~; 50/60 Hz with one-sided power supply
- ALDO R equipped with a reflector

KANLUX S.A. (kat 26362) ALDO 4LED 1X150 + GLASSv2 / Krzywa rozsyłu światła (biegunowo)

Oprawa: KANLUX S.A. (kat 26362) ALDO 4LED 1X150 + GLASSv2  
Lampy: 1 x T8 LED GLASSv2 24W-NW



KANLUX S.A. (kat 26362) ALDO 4LED 1X150 + Miledo / Krzywa rozsyłu światła (biegunowo)

Oprawa: KANLUX S.A. (kat 26362) ALDO 4LED 1X150 + Miledo  
Lampy: 1 x T8 LED 22W-NW

